

Westlake Parent-Teacher Association
c/o Westlake Elementary School
1000 High Street, Santa Cruz, CA 95060
president@supportwestlake.org

Dear Westlake Families,

Our Westlake community shines because of the energy, dedication, and generosity of families like yours! The 2025/2026 school year is off to an incredible start. The funds you contribute and the time you give allow Westlake to extend beyond what state and district budgets can provide, creating an enhanced learning environment for every student. **In the spirit of building and supporting our community, we write to you with our annual direct appeal.**

Thanks to your support, our classrooms are stronger with **six** teacher aides (paraeducators) to assist classrooms, an Arts Coordinator to nurture creativity, transportation for field trips, playground equipment and opportunities like dance for grades 3-5, assemblies, increased time in Life Lab with teacher Jane, and enriched learning experiences (including Chess club). Your generosity also helps ensure teachers have the resources they need and keeps our art program well supplied, cultivating a rich educational experience for every child.

Our goal is to have participation from every family in the Westlake Wildcat community. We ask each family to participate in a way and at a level that works for them. Every gift or volunteer hour makes a difference, and no amount is too small. To guide contributions, **if you have one student enrolled, we suggest a donation of \$300 and \$500 for families with multiple students enrolled.**

Families who contribute \$550 for one student or \$750 for more than one student will receive a special edition Westlake cooler tote.

There are many ways to donate to the direct appeal; more detailed information can be found in the packet attached and at supportwestlake.org/donate.

Thank you for being part of the Westlake Wildcat family, we are grateful for all of your support. **Your generosity helps Westlake Elementary School, our community, and our children thrive.**

With Great Appreciation,

Emily Jacobson, PTA President and Ash Akerson, PTA Vice President

The Westlake PTA is recognized as a section 501(c)(3) non-profit by the IRS. your donation is tax-deductible as allowed by law. Tax ID 94-6174766.



HIKING UP TO REACH \$175K

Help Wildcats reach our goal! Direct Appeal is August 25, 2025 - September 12, 2025



www.supportwestlake.org/donate



HOW TO CONTRIBUTE:

Gift Amount of your Choice

One lump sum gift of:

- \$300 - suggested for 1 student
- \$500 - suggested for multiple
- Any amount is appreciated- your participation is what counts!



To thank families who donate \$550/child or \$750/multiple, we will gift a cooler tote with Westlake logo

How to Pay

- Cash/Check
- Credit Card
- Online
- Recurring payments optional

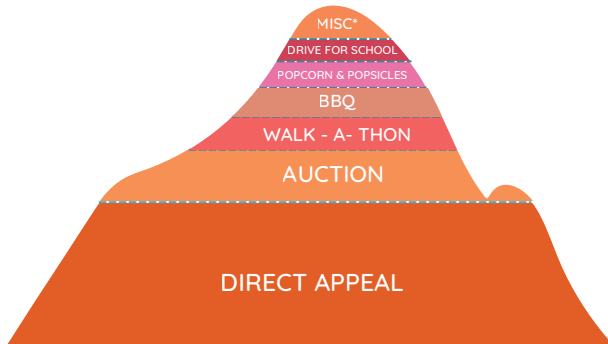
Business Sponsorships

Join our Trailblazing heroes!
More information on the attached flyer

Employee Matching

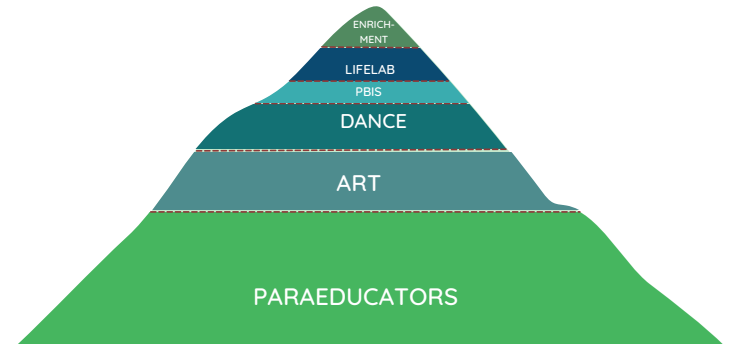
Double your donation! Check if your employer offers matching!

HOW WE RAISED FUNDS IN 2024-2025



*Miscellaneous = Passive Income Fundraisers, Dining for Dollars, Bake Sales, Movie Nights

HOW DOLLARS ARE SPENT IN 2025-2026?



(This is not an exhaustive list of our expenditures)

I WILL SUPPORT OUR WILDCATS!

PLEASE FILL BELOW AND RETURN ONE STUB PER FAMILY TO YOUR CHILD'S CLASS

CIRCLE ONE: \$25 \$50 \$100 \$300 \$500
\$550 \$750 \$1000 \$2000 other_____

- ENCLOSED IS A CHECK/CASH
make checks payable to: 'Westlake PTA'
- I MADE A LUMP SUM ONLINE DONATION
www.supportwestlake.org/donate
- I SET UP RECURRING MONTHLY PAYMENTS ONLINE
- I SET UP CORPORATE MATCHING
www.supportwestlake.org/employee-matching
- I AM A BUSINESS SPONSOR
www.supportwestlake.org/local-sponsors

DONOR NAME: _____

DONOR EMAIL: _____

STUDENT 1: _____

CLASS: _____

STUDENT 2: _____

CLASS: _____

STUDENT 3: _____

CLASS: _____

PTA INPUT:

WESTLAKE BUSINESS SPONSORSHIP LEVELS

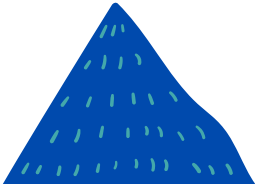
Thank you for supporting your local public school!

SUMMIT SPONSOR (\$2,000+)



- 1 week of promotion on our Westlake Marquee
- Logo/Ad in the Westlake Yearbook
- Commemorative Westlake cooler tote with logo
- Full page logo in the printed school directory
- Logo on the PTA website homepage
- Logo at the bottom of all PTA newsletters
- Sponsor Spotlight in the PTA newsletter - Highlight your business!

BASECAMP SPONSOR (\$1,000+)



- Logo/Ad in the Westlake Yearbook
- Commemorative Westlake cooler tote with logo
- Full page logo in the printed school directory
- Logo on the PTA website homepage
- Logo at the bottom of all PTA newsletters
- Sponsor Spotlight in the PTA newsletter - Highlight your business!

TRAILBLAZER SPONSOR (\$500+)



- Quarter page logo in the printed school directory
- Logo on the PTA website homepage
- Logo at the bottom of all PTA newsletters
- Sponsor Spotlight in the PTA newsletter - Highlight your business!

We are grateful for your contribution.
Find payment options and submit your business logo on our website:
www.supportwestlake.org/local-sponsors



Westlake Elementary PTA is a 501(c)3 organization, so your donation may be tax-deductible. Our tax ID number is 94-6174766.

2025-2026



Westlake Elementary PTA
c/o Westlake Elementary School
1000 High Street
Santa Cruz, CA 95060